

## What other support can the project offer to CGTs?

We are looking at ways to bring the CGTs across the region together to exchange ideas and good practice. This might be through a regional internet forum, study days, and perhaps sub-regional meetings; these might well involve officers from our partner agencies, including local authority officers, The Garden History Society and Parks & Gardens UK.



### Contact Details

If you would like to get involved, learn more about the project, discuss a site, or have ideas to offer, please contact:

Verena McCaig, Historic Landscape Project Officer – South East Region  
T: 07904 608553 or 020 7251 2610  
E: verena.mccaig@naturalengland.org.uk

Association of Gardens Trusts, 70 Cowcross Street, London EC1M 6EJ

To find contact details of your county gardens trust, go to [www.gardenstrusts.org.uk](http://www.gardenstrusts.org.uk)

### Further Reading and Links

Farming the Historic Landscape – Caring for Historic Parkland, English Heritage (2005) [www.english-heritage.org.uk/publications](http://www.english-heritage.org.uk/publications)  
Heritage At Risk: [www.english-heritage.org.uk/protecting](http://www.english-heritage.org.uk/protecting)

Higher Level Stewardship – NE website  
[www.naturalengland.org.uk/ourwork/farming/funding/es/hls](http://www.naturalengland.org.uk/ourwork/farming/funding/es/hls)

Parks & Gardens UK – on-line historic gardens information resource  
[www.parksandgardens.ac.uk](http://www.parksandgardens.ac.uk)

### Project funded by English Heritage and Natural England

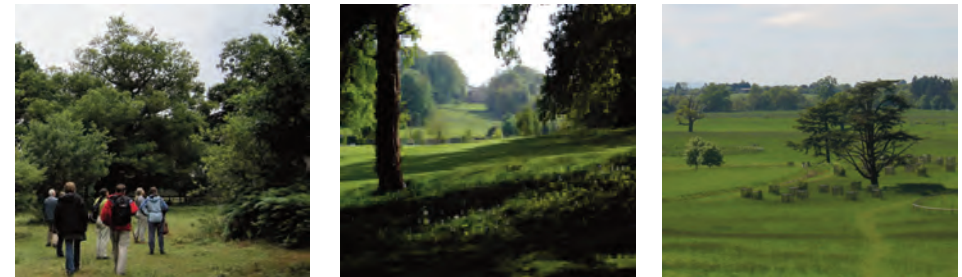
Association of Gardens Trusts Registered Charity No 10892858 Company No 3985370 Registered in England & Wales  
Images courtesy of English Heritage and AGT



**Association of Gardens Trusts**  
Representing 36 County Gardens Trusts

## Historic Landscape Project – South East

### Conservation through partnership



The Association of Gardens Trusts is working in partnership with English Heritage and Natural England to support volunteers from the County Gardens Trusts to play a greater role in the conservation of our historic designed landscapes.

This leaflet explains the principles of the project and how you can get involved.

The project aims to:

- identify vulnerable designed landscapes which could benefit from funding and sensitive management under Natural England's agri-environment scheme, Higher Level Stewardship (HLS)
- support volunteers from County Gardens Trusts (CGT) to play a greater role in the conservation management of these landscapes through developing and applying their skills.

**Volunteers play a crucial role in researching and conserving our fragile landscapes – and local knowledge is invaluable!**

## What is a County Gardens Trust?F

A CGT is a voluntary organisation concerned with the enjoyment, protection and conservation of our designed landscape heritage. There is a CGT for each county in England, and one for Wales. They are run by volunteers who carry out research, organise events and education, support practical projects, and offer advice and guidance.



## What is Higher Level Stewardship?

HLS is a financial incentive scheme which encourages farmers and landowners to manage their land in a way which conserves its environmental and historic value, and encourages greater public access. The scheme is joint funded by the EU and DEFRA, and managed by Natural England.

## What can HLS achieve for historic parks and gardens?

HLS can offer considerable management and conservation benefits, including:

- providing the opportunity to bring land owners and managers together where estate ownership is fragmented
- contributing towards the costs of commissioning a written plan to offer an informed approach to a landscape's future management and development
- identification of good management practices to restore and conserve parkland and historic features, and associated biodiversity
- contributing to the capital costs of restoring traditional farm buildings and parkland structures such as lakes, temples and follies
- providing payments as incentives to transform agricultural land to pasture
- funding towards protection and succession planting for veteran trees.

## How will this project help?

This project will identify historic designed landscapes in the southeast which, in joining the HLS scheme, could benefit considerably from conservation works and more sympathetic management of the historic fabric. CGT volunteers will be supported to help in a variety of ways, including:

- providing local and historical information on vulnerable sites
- making introductions and sharing information with owners
- researching historic features, boundaries and vistas in a landscape
- commenting on proposals for changes to designed features

This work will also contribute to local projects, such as compiling local lists of significant sites, responding to development proposals, and organising visits.



## What can this project offer to volunteers?

Each CGT has different skills and resources. Training workshops will be offered in 2011-13 and vary in content depending on what priorities the Trusts have. Sessions will be designed to interest and involve volunteers, and provide practical tools and materials. Topics might include:

- using archives and field survey to research and record the history of a designed landscape
- understanding and identifying historic parkland
- developing and using Conservation Management Plans
- understanding planning and designation processes
- working with planning and conservation authorities

**Working on this project offers excellent ways to build professional skills and experience for those wishing to pursue related careers.**